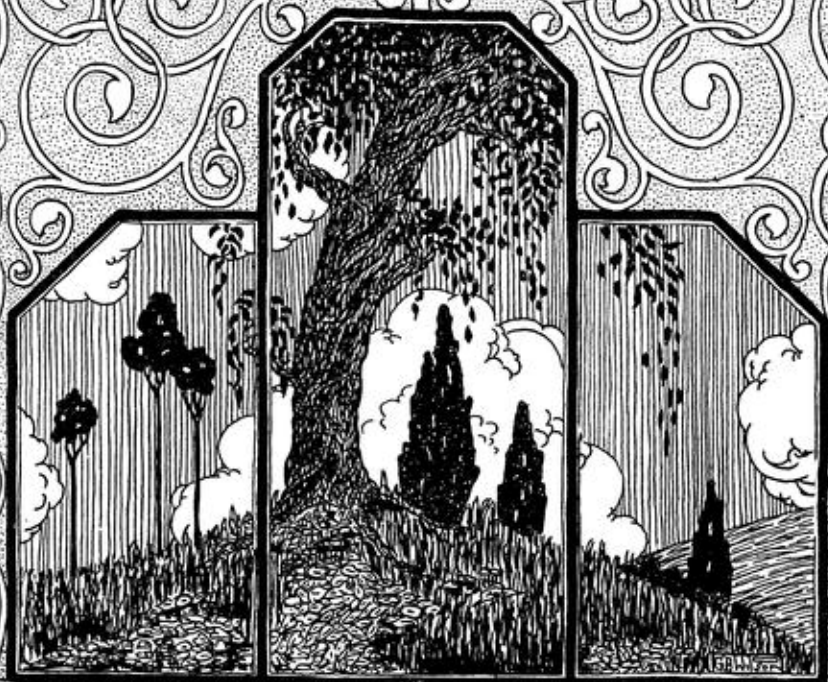
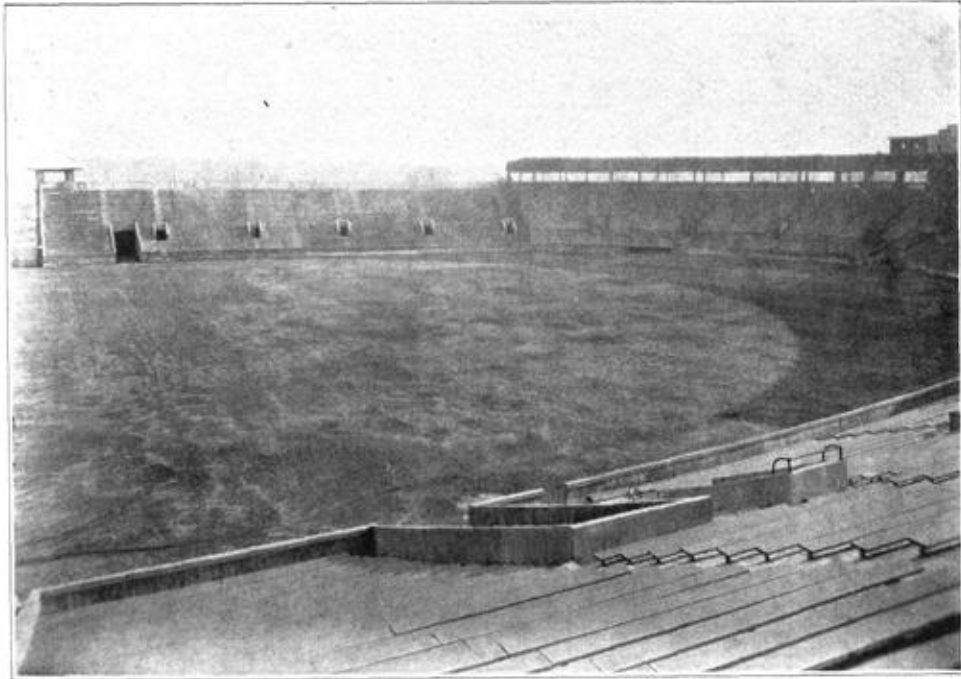


*Athletics*





## *Memorial Stadium*

Terre Haute's Memorial Stadium is built at the old Fair Grounds, and was completed in time for the annual Thanksgiving Football game. It has a total length of 600 feet and a total width of 375 feet. The Triumphal Arch which constitutes the memorial proper, represents an outlay of more than \$90,000. There are 9000 grandstand seats and 1200 movable box seats, making a total seating capacity of 20,000. The total cost of our magnificent stadium is \$200,000.

The stadium was dedicated by the Annual Garfield-Wiley Football Game.

The crowds started coming early and by the time the whistle blew for the game to start twelve thousand loyal rooters were seated. The stadium will seat twenty thousand, so for the first time in the history of the game every one had a seat.

A few minutes before the game started the Garfield team came out on the field led by three fellows who represented the "Spirit of 7-6." They ran up and down the field a couple of times and then the Wiley team came out on the field carrying a large blanket. When they turned it upside down, a large bunch of red balloons floated up in the air.

At two o'clock sharp the game began. In the first half Garfield crossed the Wiley line; but an off-side penalty called just then put them back where they started from. Before they could push it across again the whistle blew for the half. Two times in the second half Garfield threatened to score, but were held by the Red team, and the game ended 0-0. The game was hard fought and clean with only a few penalties during the whole game.